



Available at
BUNNINGS
TRADE

HOMES THAT MOVE TO YOU

CLEVER  **LIVING CO.**



HIGHLAND HOME

CLEVER LIVING CO. SERIES

These contemporary homes are a convenient and cost-effective way to build the housing you need, fast. The stylish, modern design creates generous living areas on a surprisingly small footprint.



ANGUS HOME



DEXTER HOME



SUFFOLK HOME



OXFORD HOME



MERINO SERIES - 1

The Clever Living Co. Series offers affordable housing you can rely on. Our homes can be built off-site, then transported to a location of your choice in New Zealand. Alternatively, you can have the building materials delivered as a package and built on-site by a registered builder.

A fast and cost-effective choice, The Clever Living Co. has a series of plans and styles to choose from. Whether you need a compact design to suit difficult site conditions or a larger family home, you'll find an option with open-plan living and easy indoor/outdoor flow to make entertaining a breeze.

We offer the complete package from design and construction, right through to the finishing touches. You can choose 2-bedrooms or go as large as a 4-bedroom home, depending on your requirements.

The Highland, Angus, Dexter, Suffolk and Oxford designs all have multiple-use approval certificates and have been rigorously reviewed to ensure they meet the New Zealand building code, which makes the building consent process much easier.

The plans are fully quantity surveyed so you know cost of materials up front. Our list of inclusions is one of the most comprehensive in the industry;

- **COLORSTEEL**® roofing
- **Mitsubishi** heat pumps
- **Kaboodle** kitchens
- **Omega** kitchen appliances
- **Stein** showers, vanities and toilet suites
- **Sengled** security cameras and lighting

This means you can be confident with a fixed price for building materials to finish a complete home.

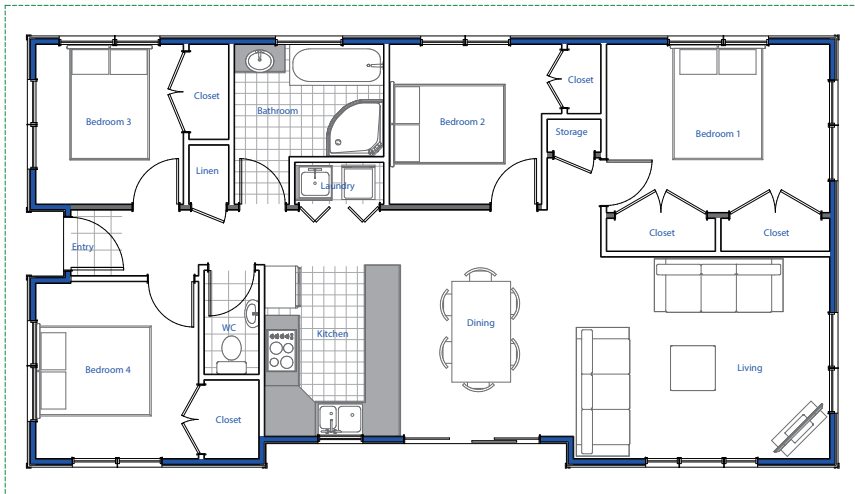


CONTENTS

Highland Home	2-3
Angus Home	4-5
Dexter Home	6-7
Suffolk Home	8
Oxford Home	9
Merino Series	10-11
What's Included?	12
Clever Consents	13

This brochure shows photography of actual Clever Living Co. homes that have been built for clients. The photographs are indicative only as these homes were finished to meet individual clients' preferences and may differ to the standard finishes and internal fixtures outlined in this brochure. All building materials and inclusions are subject to change and maybe substituted prior to order confirmation. Resource consents, building consents and necessary planning permission are still required to be eligible for a Code Compliance Certificate.





14.38m x 7.60m

Enjoy all the comforts of modern living with this large 4 bedroom home. Featuring a combined open plan kitchen with sizeable living and dining area, it's perfect for growing families.

- Spacious open-plan kitchen, living and dining areas
- 4 double bedrooms with built-in closets
- Bathroom
- Laundry
- Linen cupboard and extra storage
- Separate toilet

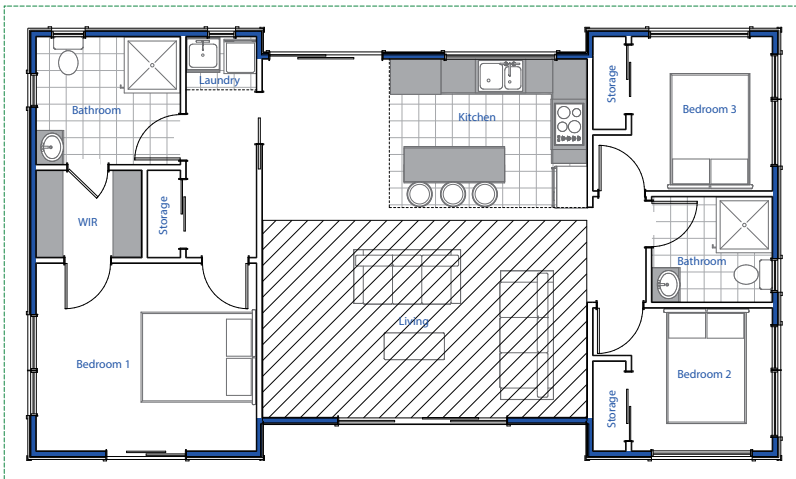
Highland

House Area 106.4m²



Master bedroom	11.94m ²
Living	16.04m ²
Kitchen	7.23m ²
Bathroom	5.32m ²





13.35m x 7.60m

Built around the bedlam of family life, you'll love the central open-plan living area, with an easy indoor outdoor flow.

- Open-plan kitchen & bar dining area
- 3 double bedrooms
- Master bedroom with ensuite and walk in-wardrobe
- 2 bathrooms (including ensuite)
- Separate laundry

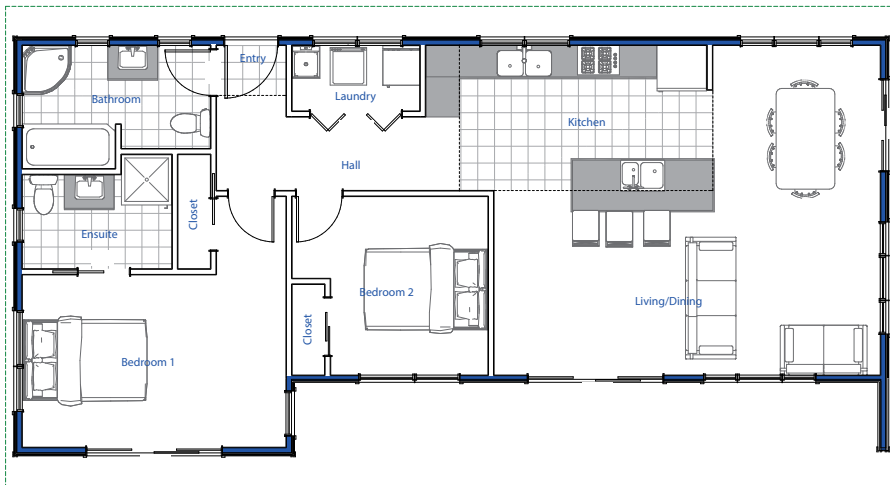
Angus

House Area 95.8m²

3 1 2

Master bedroom with ensuite & walk in-wardrobe	22.48m ²
Living	19.96m ²
Kitchen	9.43m ²
Bathroom	4.34m ²





15.53m x 7.38m

Whether you're purchasing your first home or simply want a convenient two bedroom house with open-plan living, this clever design has everything you need.

- Open-plan kitchen
- Combined living & dining with built-in closets
- Master bedroom with ensuite
- 2 bathrooms (including ensuite)
- Separate laundry

Dexter

House Area 101m²

2 1 2

Master bedroom with ensuite	16.07m ²
Living	22.18m ²
Kitchen	12.26m ²
Bathroom	6.06m ²



Suffolk

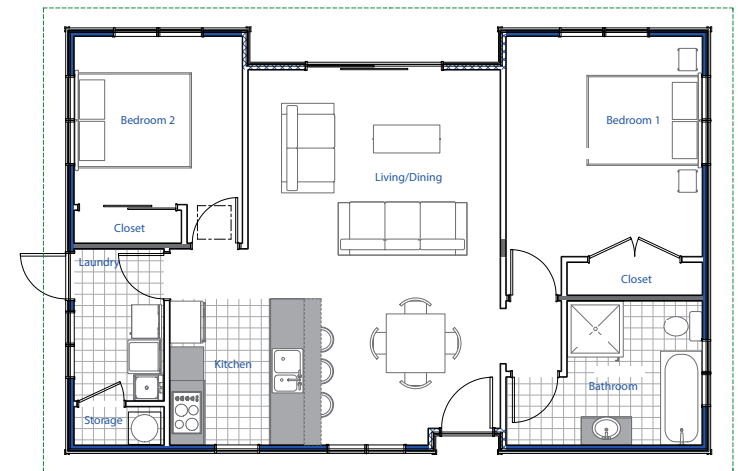
House Area 82.6m²



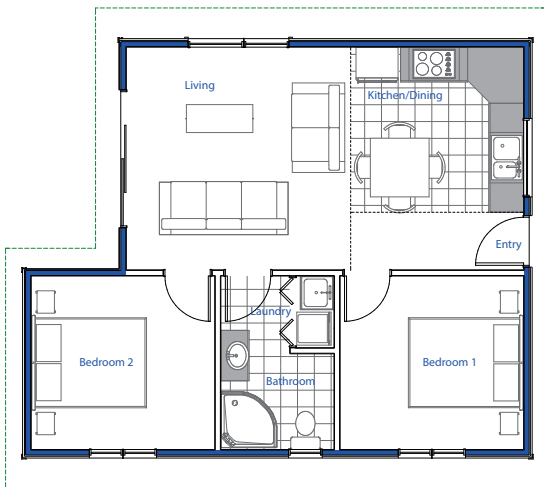
Master bedroom	13.76m ²
Living	39.53m ²
Kitchen	6.54m ²
Bathroom	6.19m ²

The Suffolk home offers open-plan living, spacious bedrooms and a tidy finish to modern amenities.

- Open-plan kitchen
- Large living & dining area
- 2 double bedrooms with built-in closets
- Bathroom
- Laundry
- Storage



11.42m x 7.50m



7.39m x 9m

Get off to a good start with this generous open-plan design that gives you room to grow. With so many features, it's a first home owner's dream.

- Combined kitchen & dining
- 2 double bedrooms
- Bathroom
- Laundry

Oxford

House Area 59.6m²

2 1 1

Bedrooms 10.17m²

Living 19.95m²

Kitchen 5.85m²

Bathroom & laundry 4.69m²



MERINO SERIES - 1



MERINO SERIES - 2

MERINO SERIES

Enjoy the convenience of a combined open plan living space. Choose from five different floor plans across the Merino Series and create a home to suit your lifestyle. The Merino Series designs do not have multiple-use certificates.

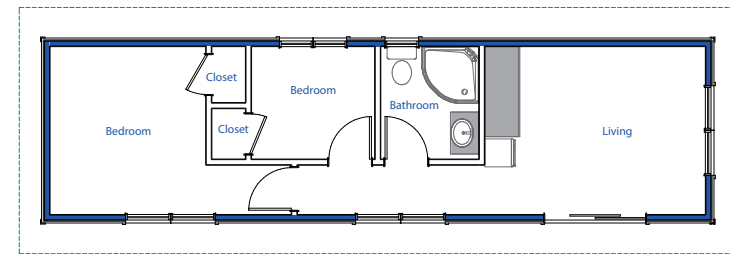
- Open-plan living
- Easy indoor outdoor flow
- 2 bedrooms with built-in closets
- Bathroom

Merino Series - 1

House Area 37.5m²



Master bedroom	9.41m ²
Living	11.83m ²
Bathroom	3.52m ²



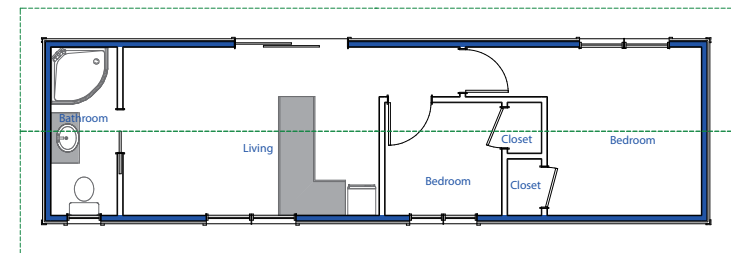
11.91m x 3.20m

Merino Series - 2

House Area 40.2m²



Master bedroom	10.15m ²
Living	14.63m ²
Bathroom	4.18m ²



3.40m x 11.82m

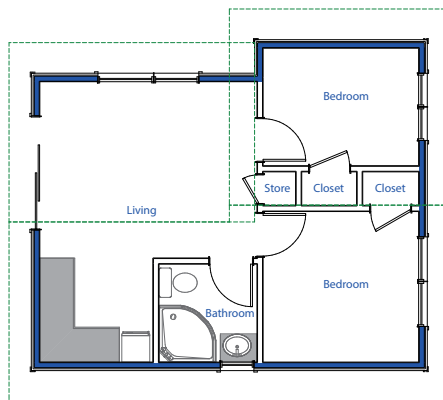


Merino Series – 3

House Area 39.7m²



Master bedroom	7.96m ²
Living	16.48m ²
Bathroom	3.06m ²



7.27m x 5.21m

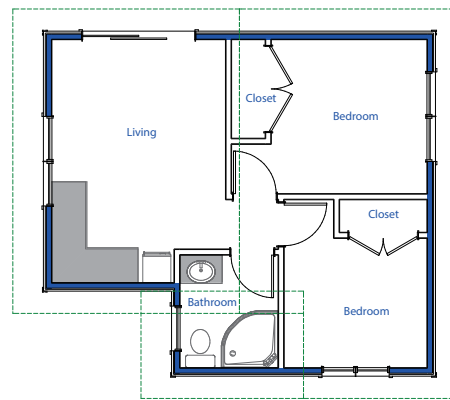


Merino Series – 4

House Area 38.4m²



Master bedroom	8.27m ²
Living	13.77m ²
Bathroom	3.52m ²



6.90m x 6.08m

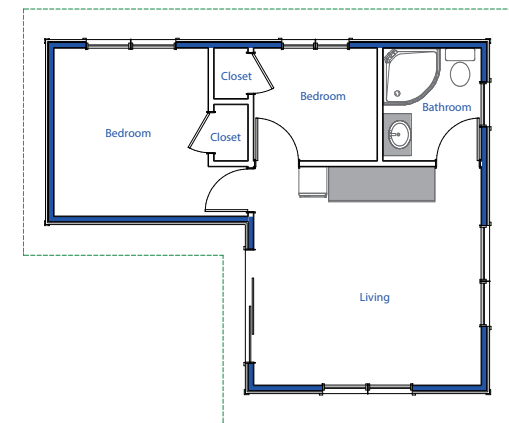


Merino Series – 5

House Area 37.9m²



Master bedroom	8.87m ²
Living	15.83m ²
Bathroom	3.52m ²



7.83m x 6.22m

WHAT'S INCLUDED?

From safety glass to smart lighting, hinges to heat pumps, a Clever Living Co. home is the complete package.

That means you'll get the following:

COLORSTEEL® ROOFING

- ZR8 or Endura 0.40 includes soffit, barge & head flashings, netting, underlay
- Rivets & fasteners included. Additional costs for sea spray & extra high wind zone areas
- Steel carries the Environmental Choice New Zealand (ECNZ) ecolabel, making them eligible for maximum points under the Green Star MAT-8 Steel credit and Homestar MAT-1 Sustainable Materials credit

KNAUF INSULATION

- R2.6 wall and R3.3 ceiling (higher R value, R3.6 in South Island)
- Sound absorbing
- Non-combustible
- 50 year warranty

SENGLED LIGHTING

- Smart sense outdoor sensor light
- Snap security camera
- Pulse light and JBL speaker
- Dimmable LED down lights

MITSUBISHI HEAT PUMPS REVERSE CYCLE

6.3KW Mitsubishi Bronte Heat Pump [Highland, Angus, Dexter]

- Powerful 18m airflow in cooling mode
- 3D auto airflow
- Allergen clear system
- R32 refrigerant
- 5 year parts and labour warranty

3.5KW Mitsubishi Avanti Heat Pump [Suffolk, Oxford & Merino]

- 3D auto airflow
- Allergen clear system
- R32 refrigerant
- 5 year parts and labour warranty

KABOODLE KITCHEN

- Wide range of colours, finishes and handles available
- Seamless finishes and no exposed corners due to thermowrap cabinetry
- Standard soft close hinges
- A completely customisable kitchen available on request

OMEGA

- 24 month warranty
- 8 function/pyrolytic oven
- Ceramic hob with touch control
- Rangehood with 2 halogen lights/touch controls

STEIN BATHROOM

- Shower with toughened safety glass
- Vanities available in white, black oak or light oak
- Toilet suite, WELS 4 star rating, heavy duty soft close seat
- 5 year warranty

NEW ZEALAND WOOD PRODUCTS

H3.2 Plyfloor

- Squeak-free floor system using tongue & groove J-Ply together with polyurethane adhesive
- FSC® certified
- Meets Australian and New Zealand standard: AS/NZS 2269.0:2012
- CCA treated for exterior or wet area use



CLEVER (AND QUICK) CONSENTS

Clever Living Co. homes come with an MBIE MultiProof approval for a faster building consent process. In fact, it can cut the building consent time in half. Keep in mind, planning permission and often resource consent is still required – here are the ins and outs.

Building consent in a nutshell: because you have a MultiProof for the design, the BCA can process your building consent application within 10 working days instead of the usual 20.[†]

What is MultiProof?

Multiple-use approval for standardised building designs like Clever Living Co. is confirmation from the MBIE that these specific building plans and specifications comply with the New Zealand Building Code (NZBC).

How it works

Your MultiProof design is compliant with the NZBC, however you still need to apply for a building consent each time you want to build. This allows the Building Consent Authority (BCA) to confirm:

- The design, with any permitted variations, is the same as the design approved in the MultiProof
- The proposed site meets the conditions of the MultiProof
- Any site-specific features comply with the NZBC
- Which inspections are required

[†]Merino Series does not have MultiProof therefore the consent process may take longer.

HOMES THAT MOVE TO YOU

For more information:

Call the Bunnings Support Centre Trade Team on **[09] 978-2200**

Email **sales@bunnings.co.nz**

Or contact your local Bunnings Account Manager.



CLEVER LIVING CO.